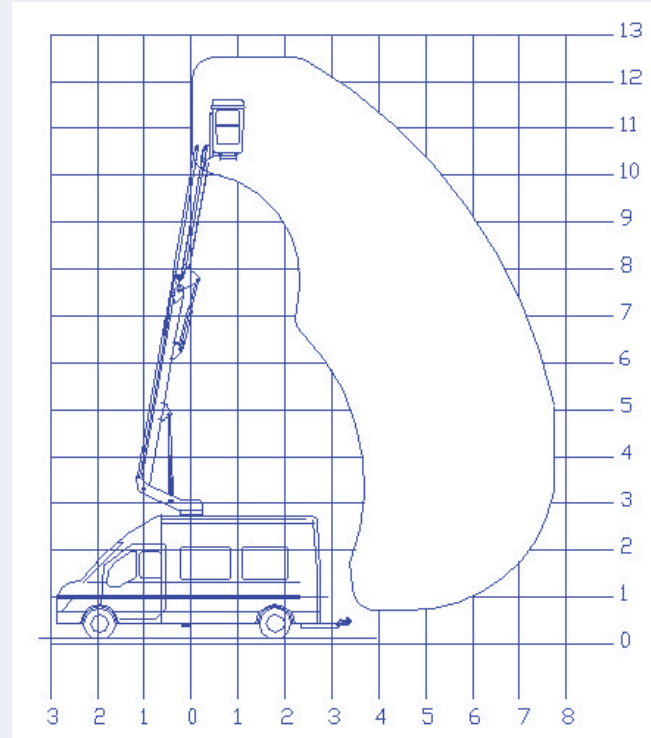




## Ascendant 12.5 VM



### Special features

Two boom reverse articulated lift mechanism with mechanical stops.

Full pressure proportional hydraulic controls.

Engine stop start at platform controls.

Stabiliser controls in cab with automatic activation of platform control when set.

DC power pack for emergency operation of booms and stabilisers, plus manual rotation and descent.

Jacks/boom and PTO/handbrake interlocks

Warning lights for:

- booms not stowed
- jacks not stowed
- PTO engaged

### Vehicle specifications

Maximum working height .....	12.5m
Maximum platform height .....	10.5m
Max. working outreach .....	7.7m
SWL .....	230kg
Platform dimensions .....	0.8 x 1.3 x 1.1m
Stabiliser spread .....	2.6m
Kerb weight (Ford Transit 350 LWB).....	3050kg

### Typical chassis

GVW.....	3500kg
Wheelbase .....	3750mm
Travel length .....	7.1m
Travel width .....	2.0m
Travel height .....	3.45m

